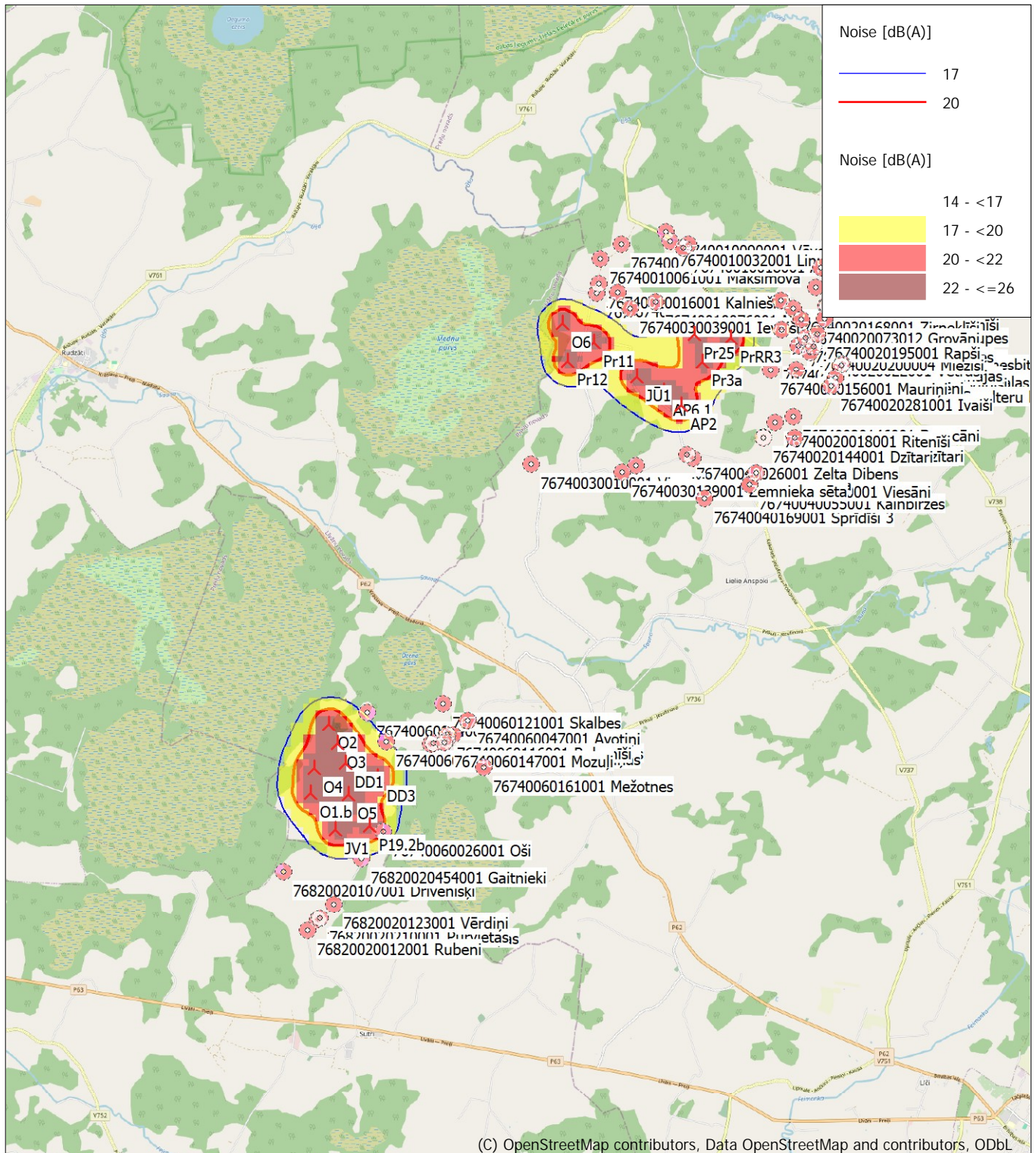


DECIBEL - Map 6.0 m/s Regular dwellings

Calculation: Vestas V162-6.2 MW ST A alternative

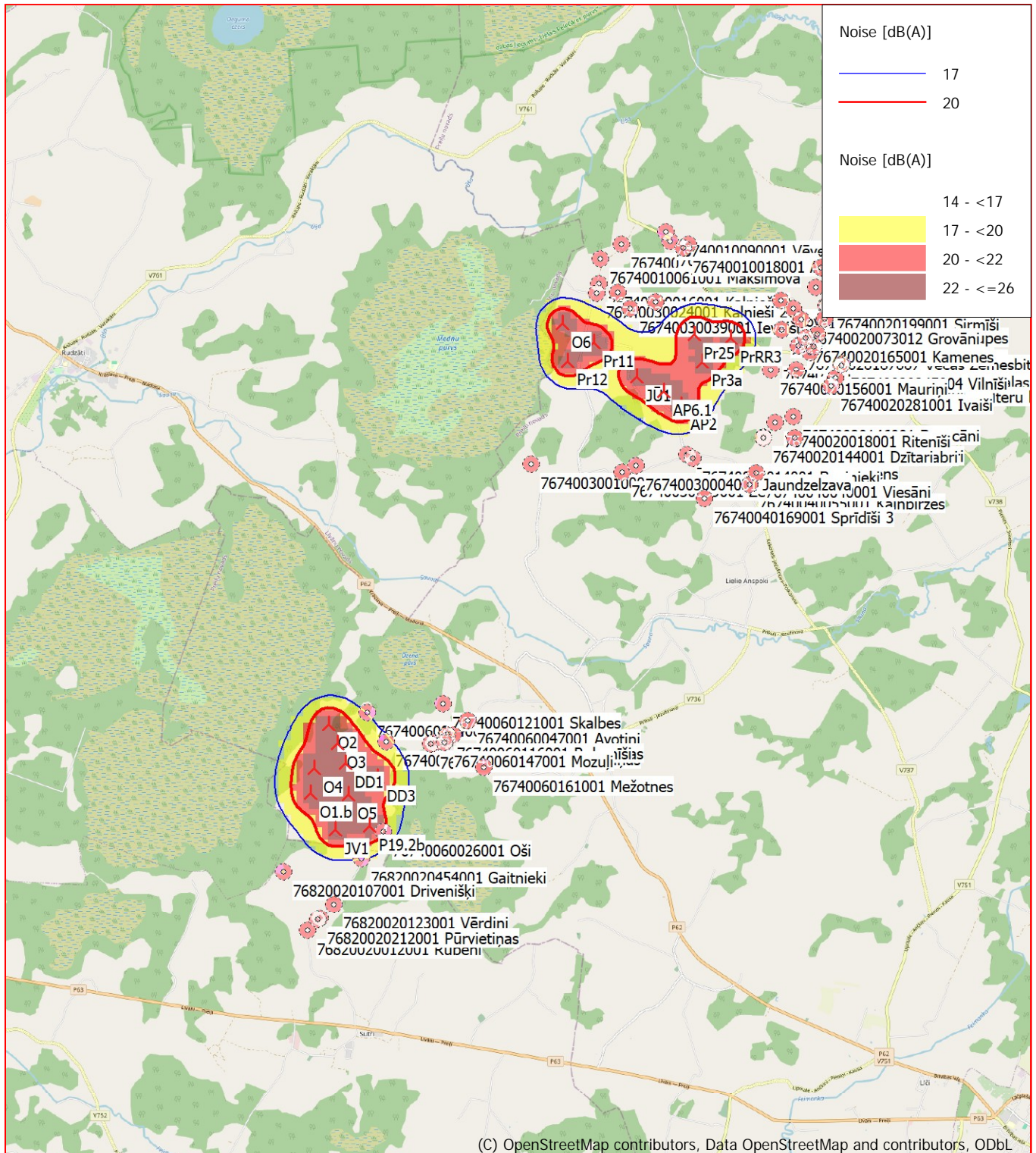


Map: EMD OpenStreetMap, Print scale 1:100,000, Map center Geo WGS84 East: 26.578066° E North: 56.383993° N
 New WTG Noise sensitive area
 Noise calculation model: Danish low frequency 2019. Wind speed: 6.0 m/s Regular dwellings
 Height above sea level from active line object

Vestas V162 A alternative

SIA Estonian, Latvian & Lithuanian environment
Vilandes 3-6
LV-1010 Riga
0037167242411
Kristiana / kristiana@environment.lv
Calculated:
14/07/2025 5:32 pm/4.0.547

Calculation: Vestas V162-6.2 MW ST A alternative



(C) OpenStreetMap contributors, Data OpenStreetMap and contributors, ODbL

A horizontal number line is shown with tick marks at 0, 1, 2, 3, and 4 km. The line is divided into four equal segments of 1 km each. The segments are colored alternately: the first segment (0 to 1 km) is white, the second (1 to 2 km) is black, the third (2 to 3 km) is white, and the fourth (3 to 4 km) is black.

 New WTG

■ Noise sensitive area

Noise calculation model: Danish low frequency 2019. Wind speed: 8.0 m/s Regular dwellings

Height above sea level from active line object